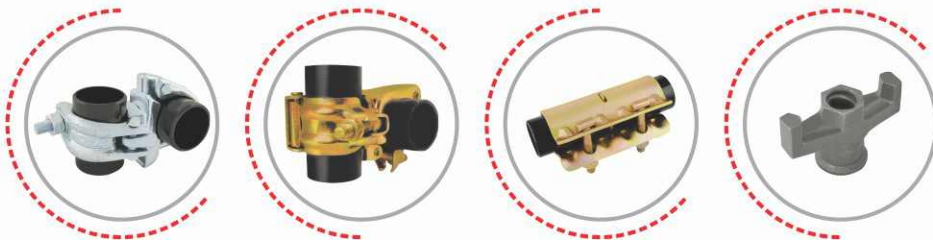




SCAFFOLDING



UNICROSS GLOBAL PVT. LTD.
AN ISO 9001 : 2015 CERTIFIED COMPANY

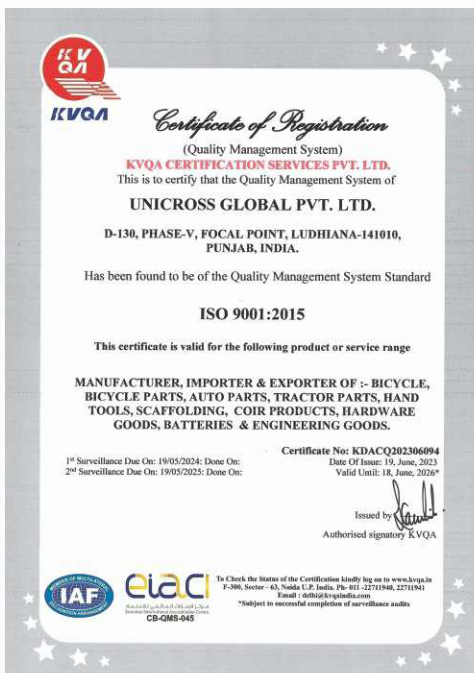
INTRODUCTION

Founded in 1993, Unicross Global Private Limited has earned a reputation for excellence and innovation in the global manufacturing and export industry. With over three decades of expertise, the company has emerged as a trusted leader in producing high-quality scaffolding solutions under our esteemed trademark "Unicross".

Unicross Global stands out for its commitment to setting industry benchmarks and delivering products that are not only reliable and cost-effective but also of the highest quality. Recognized as a Star Export House by the Government of India and a proud member of the Federation of Indian Export Organizations (FIEO), the company is dedicated to upholding rigorous quality standards, ensuring timely deliveries, and maintaining efficient management practices.

Equipped with cutting-edge infrastructure and driven by a dedicated research and development team, Unicross Global continually innovates, staying ahead in a competitive market. Their unwavering focus on quality is encapsulated in their motto, "The quality comes first," reflecting their commitment to providing products that meet and exceed global standards. , Unicross Global is synonymous with quality and reliability.

Committed to Excellence





DROP FORGED COUPLER



UGPL : 101
Double Coupler
BS1139-EN74 Ø48.3 x 48.3mm



UGPL : 102
Swivel Coupler
BS1139-EN74 Ø48.3 x 48.3mm



UGPL : 103
Combination Double Coupler
Ø48.3 x 60mm



UGPL : 104
Combination Swivel Coupler
Ø48.3 x 60mm



UGPL : 105
Double Coupler (Oval)
EN74 Ø48.3 x 48.3mm



UGPL : 106
Swivel Coupler (Oval)
EN74 Ø48.3 x 48.3mm



UGPL : 107
Double Coupler (Dual)
With Eye Bolt



UGPL : 108
Swivel Coupler (Dual)
With Eye Bolt



UGPL : 109
Half Swivel Coupler
Ø48.3mm

DROP FORGED COUPLER



UGPL : 110
Half Swivel Coupler (Oval) W/Bolt
Ø48.3mm



UGPL : 111
Half Swivel Coupler (Oval)
Ø48.3mm



UGPL : 112
Half Swivel with Ledger Blade
Ø48.3mm



UGPL : 113
Swivel Coupler
Ø76.2 x 76.2mm



UGPL : 114
Putlog Coupler
Ø48.3mm



UGPL : 115
Board Retaining Clamp
Ø48.3mm



UGPL : 116
Swivel Coupler
Ø48.3mm



UGPL : 117
Grav Lock Coupler
Ø48.3mm



UGPL : 118
Toe Board Coupler
Ø48.3mm



PRESS COUPLER



UGPL : 201
Grav Lock Coupler
Ø48.3mm



UGPL : 202
Putlog Coupler
Ø48.3mm



UGPL : 203
Staircase Coupler



UGPL : 204
Sleeve Coupler
Ø48.3mm



UGPL : 205
Putlog Head Adapter



UGPL : 206
Joint Pin



UGPL : 207
Fencing Coupler



UGPL : 208
Roof Coupler



UGPL : 209
Ladder Clamp



PRESS COUPLER



UGPL : 210
Half Swivel Coupler



UGPL : 211
Swivel Wedge Coupler



UGPL : 212
Single Wedge Coupler



UGPL : 213
Double Coupler (Normal)
Ø48.3 x 48.3mm



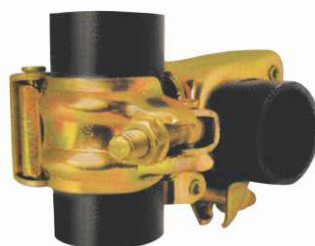
UGPL : 214
Swivel Coupler (Normal)
Ø48.3 x 48.3mm



UGPL : 215
Double Coupler
Ø48.3 x 48.3mm



UGPL : 216
Swivel Coupler
Ø48.3 x 48.3mm



UGPL : 217
Double Coupler
Ø48.3 x 48.3mm



UGPL : 218
Swivel Coupler
Ø48.3 x 48.3mm

KWICK STAGE SYSTEM



ACCESSORIES



UGPL : 350-11
U - Pressing



UGPL : 350-12
C - Pressing



UGPL : 350-13
V - Pressing



UGPL : 350-14
Banana Pressing



UGPLF : 350-15
Wedge



System

UGPL : 300-A

Vertical Standard with Round Spigot End

Item Code	Size Mtr. (Ft.)	Weight (Kg.)
UGPL-300-10	1.0 (3'.3")	6.20
UGPL-300-20	2.0 (6'.6")	11.70
UGPL-300-30	3.0 (9'.9")	17.20

UGPL : 301-B - Ledger

Item Code	Size Mtr. (Ft.)	Weight (Kg.)
UGPL-301-12	1.2 (4')	5.55
UGPL-301-18	1.8 (6')	6.95
UGPL-301-24	2.4 (8')	8.85

UGPL : 302-C - Board Bracket

Item Code	Size Mtr. (Ft.)	Weight (Kg.)
UGPL-302-12	1.2 (4')	9.70
UGPL-302-18	1.8 (6')	13.10
UGPL-302-24	2.4 (8')	16.05

UGPL : 303-D - Face Brace

Item Code	Size (Ft.)	Weight (Kg.)
UGPL-303-10	4' - 6'.6"	10.90
UGPL-303-20	6' - 6'.6"	13.10



CUP LOCK SYSTEM



UGPL : 400-A

Vertical Standard (Open End)

Item Code	Size (Mtr.)	Weight (Kg.)
UGPL-400-10	1.0	4.60
UGPL-400-13	1.3	6.10
UGPL-400-15	1.5	6.80
UGPL-400-18	1.8	8.50
UGPL-400-20	2.0	9.30
UGPL-400-23	2.3	10.50
UGPL-400-25	2.5	11.30
UGPL-400-30	3.0	13.80

UGPL : 401-B

Ledger

Item Code	Size (Mtr.)	Weight (Kg.)
UGPL-401-06	0.60	2.60
UGPL-401-09	0.90	3.50
UGPL-401-10	1.00	3.90
UGPL-401-12	1.20	4.40
UGPL-401-13	1.30	4.80
UGPL-401-16	1.60	5.70
UGPL-401-18	1.80	6.30
UGPL-401-25	2.50	8.80

UGPL : 402-C

Intermediate Transom

Item Code	Size (Mtr.)	Weight (Kg.)
UGPL-402-05	0.565	3.70
UGPL-402-08	0.795	4.70
UGPL-402-12	1.200	6.10
UGPL-402-13	1.300	6.40
UGPL-402-18	1.800	8.10
UGPL-402-25	2.500	11.20



UGPL : 403
Transom Blade





CUP LOCK ACCESSORIES



UGPL : 404
Bottom Cup
4.0mm



UGPL : 405
Bottom Cup
4.5mm



UGPL : 406
Spigot



UGPL : 407
Ledger Swivel



UGPL : 408
Ledger Blade



UGPL : 409
Top Cup 3 Lug (Casting)



UGPL : 410
Top Cup 4 Lug (Casting)



UGPL : 411
Top Cup 3 Lug (Forged)

CUP LOCK ACCESSORIES



UGPL : 412
Top Cup 4 Lug (Forged)



UGPL : 413
Drop Head
Also Available With Spigot



UGPL : 414
Wedge Plate

FORM WORK PRODUCTS



UGPL : 501
Wing Nut 2 Lug (Casted)



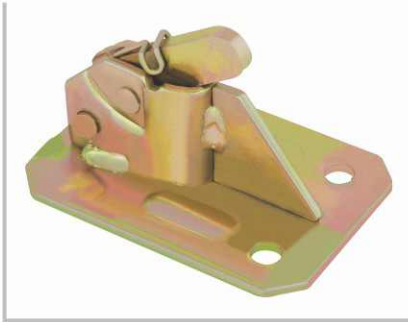
UGPL : 502
Wing Nut 2 Lug (Forged)



UGPL : 503
Water Barrier With Disk



FORM WORK PRODUCTS



UGPL : 504
Rapid Clamp (Sheet Metal)



UGPL : 505
Water Barrier



UGPL : 506
Tie Rod



UGPL : 507
Anchor Nut Three Lug (Forged)



UGPL : 508
Anchor Nut Two Lug (Casted)



UGPL : 509
Waller Plate
120 x 120 x 10/12mm



UGPL : 510
Pin Ø 25mm



UGPL : 511
Tension Pin



UGPL : 512
Tee - Pin

PROP & PROP NUTS



UGPL : 601-A Heavy Duty Prop

Item Code	Close Ht. / Open Ht. (Mtr.)	Weight (Kg.)
UGPL-601-11	1.07 / 1.82	11.00
UGPL-601-17	1.75 / 3.12	16.70
UGPL-601-18	1.98 / 3.35	18.40
UGPL-601-20	2.59 / 3.95	20.20
UGPL-601-24	3.20 / 4.87	24.20

UGPL : 602-B Light Duty Prop

Item Code	Adjustment (Mtr.)	Weight (Kg.)
UGPL-602-03	0.25 - 0.50	3.30
UGPL-602-04	0.50 - 0.80	4.10
UGPL-602-05	0.70 - 0.80	5.00
UGPL-602-06	1.00 - 1.80	5.90
UGPL-602-10	1.60 - 2.90	9.70
UGPL-602-11	2.00 - 3.60	10.70
UGPL-602-12	2.50 - 4.50	11.70
UGPL-602-13	3.00 - 5.00	13.40



UGPL : 603
Prop Nut (Forged)



UGPL : 604
Prop Nut (Casted)



UGPL : 605
Prop Sleeve



A

B



JACK & BASE PLATES



UGPL : 700

Adjustable Base Jack (Pipe OD 38mm)

Item Code	TL/AL (Mtr.)	Weight (Kg.)
UGPL-700-26	0.450 / 0.350	2.60
UGPL-700-29	0.550 / 0.450	2.95
UGPL-700-33	0.650 / 0.550	3.30
UGPL-700-37	0.750 / 0.650	3.70

UGPL : 701

Adjustable Base Jack (Pipe OD 34mm)

Item Code	TL/AL (Mtr.)	Weight (Kg.)
UGPL-701-25	0.450 / 0.350	2.45
UGPL-701-27	0.550 / 0.450	2.75
UGPL-701-31	0.650 / 0.550	3.10
UGPL-701-34	0.750 / 0.650	3.40

UGPL : 702

Adjustable Base Jack (Pipe OD 32mm)

Item Code	TL/AL (Mtr.)	Weight (Kg.)
UGPL-702-46	0.500 / 0.400	4.60
UGPL-702-53	0.600 / 0.500	5.35
UGPL-702-67	0.800 / 0.700	6.70
UGPL-702-81	1.000 / 0.800	8.12



UGPL : 703-A

Adjustable U Head Jack (Pipe OD 38mm)

Item Code	Size	Weight (Kg.)
UGPL-703-47	100	4.70
UGPL-703-57	150	5.75
UGPL-703-68	200	6.80

UGPL : 704-B

Universal Jack (Pipe OD 38mm)

Item Code	TL/AL (Mtr.)	Weight (Kg.)
UGPL-704-16	0.450 / 0.350	1.60
UGPL-704-19	0.550 / 0.450	1.95
UGPL-704-23	0.650 / 0.550	2.30
UGPL-704-27	0.750 / 0.650	2.70

(Pipe OD 34mm)

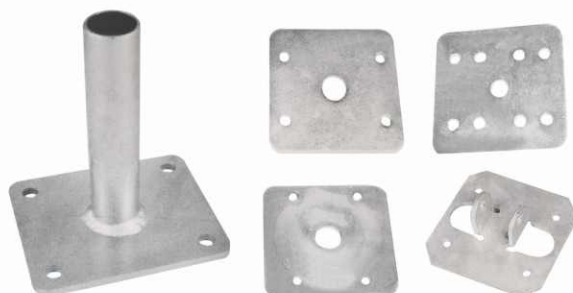
Item Code	TL/AL (Mtr.)	Weight (Kg.)
UGPL-704-14	0.450 / 0.350	1.45
UGPL-704-17	0.550 / 0.450	1.75
UGPL-704-21	0.650 / 0.550	2.10
UGPL-704-24	0.750 / 0.650	2.40



UGPL : 705
Swivel Base Jack



UGPL : 706
Fork Head Jack



UGPL : 707
Base Plates





JACK NUTS



UGPL : 801
Jack Nut
M 38 / Ø48mm



UGPL : 802
Jack Nut
M 38 / Ø48mm



UGPL : 803
Jack Nut
M 32



UGPL : 804
Jack Nut
M 38



UGPL : 805
Jack Nut
M 60



UGPL : 806
Jack Nut
M 34 / Ø42mm



UGPL : 807
Jack Nut
M 48 / Ø60mm



UGPL : 808
Jack Nut
M 48



FORK HEADS



UGPL : 901
Fork Head (Heavy)
6.0mm



UGPL : 902
Fork Head (Medium)
6.0mm



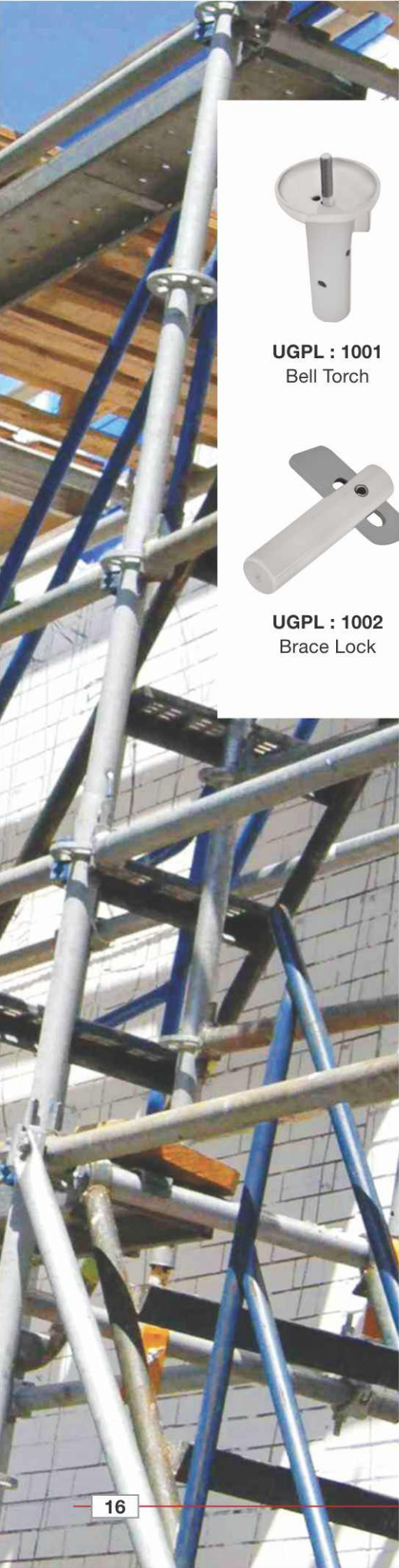
UGPL : 903
Fork Head (Light)
4.0mm



UGPL : 904
Slotted Fork Head



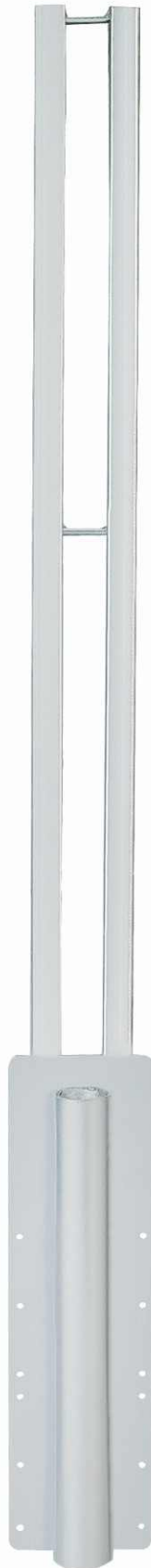
FORGING / CASTING SHEET METAL ITEM



UGPL : 1001
Bell Torch



UGPL : 1002
Brace Lock



UGPL : 1003
Parallel Beam



UGPL : 1100
Sleeve Clip



UGPL : 1101
V-Clip



UGPL : 1102
Pallet Bowl



UGPL : 1103
Base Plate 20mm



UGPL : 1104
End Casting



UGPL : 1105
Brace End



UNICROSS

UNICROSS GLOBAL PVT. LTD.

D-130, Phase-V, Focal Point, Ludhiana-141 010 (Pb.) INDIA

+91-82889-44600, 98725-00063, 75024-75025

✉ : sales@unicrossglobal.in, sales1@unicrossglobal.in, unicrossglobal@gmail.com

🌐 : www.unicrossglobal.in

